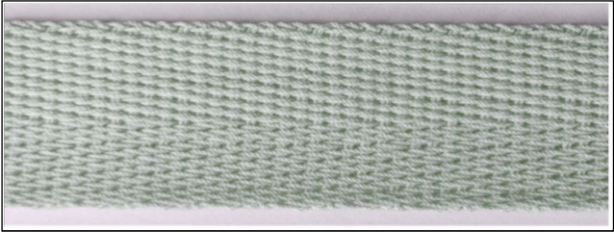




Technical Test Certificate - MIL Spec.& PIA - Tapes/Webbings/Elastics

| | | | | | | | | | | | | |
|---|------------------------|--|-------------------|---------------------|--------------------------------|--|--|--|--|--|--|--|
| 1 | Item Name | Tape Cotton 1.00"(25.4mm) BS 575 Pound(261kgf) NAT | | | Attach Below Item Image | | | | | | | |
| 2 | Report No : | VSPL/TTC/NWF/003 | Date : | 12.08.2024 | | | | | | | | |
| 3 | Customer Name : | Viraj Syntex Pvt. Ltd. | Our Item Code : | NWFS-PIA-C-9001 NAT | | | | | | | | |
| 4 | MIL Specification No : | PIA-W-5665 | Type & Class No : | II & 0 | | | | | | | | |
| 5 | Loom Type : | Shuttle Loom | Job No & Date : | Sample | | | | | | | | |
| 6 | Sample Tested : | 5 | Qty/Lot Size : | 15 yards | | | | | | | | |



| Sr | DETAILS | Specn Requirements | Tolerance | Test Results 1 | | | Test Result 2 | Test Result 3 | Test Result 4 | Test Result 5 | Test Results (Av) | Test Method | |
|---------------------|--|--------------------|-----------|-------------------|-------------|--------------|---------------|---------------|---------------|---------------|--------------------------|---------------------------------|-----------------------|
| 1 | Width (Inch) : | 1.0 | ± 1/16 | 1.000 | 25.4 | mm | 1.001 | 1.000 | 1.002 | 1.001 | 1.001 | ASTM D 3774 Option B | |
| 2 | Weight / Meter (Oun/Yd.) : | 0.75 | max. | 0.735 | 22.78 | Gm | 0.733 | 0.734 | 0.732 | 0.733 | 0.733 | ASTM D 3776 Option D | |
| 3 | Thickness (Inch) : | 0.040-0.050 | N/A | 0.046 | 1.17 | mm | 0.045 | 0.044 | 0.046 | 0.045 | 0.045 | ASTM D 1777 Option 2 | |
| 4 | Picks / Inch : | 20.0 | min. | 20.0 | 79 | dm | 20 | 20 | 20 | 20 | 20 | ASTM D 3775 | |
| 5 | Warp Yarns / Inch : | N/A | N/A | N/A | | | N/A | N/A | N/A | N/A | N/A | N/A | |
| 6 | Break Strength (Pound) & Test Graph : | 575 | Required | min. | 628 | 285 | Kgf | 630 | 635 | 640 | 625 | 632 | 4108 - Graph Attached |
| 7 | After Abrasion Break Strength (Pound) & Test Graph : | N/A | Required | N/A | N/A | N/A | N/A | N/A | N/A | N/A | N/A | N/A | |
| 8 | Elongation (%) at BREAK : | N/A | min. | N/A | | | N/A | N/A | N/A | N/A | N/A | N/A | |
| | at WLL : | N/A | N/A | N/A | | | N/A | N/A | N/A | N/A | N/A | N/A | |
| 9 | Material Type & Den/Ply/TPI of Warp 1 : | Cotton Yarn | 20/4/4 | N/A | Cotton Yarn | 20/4/4 | N/A | N/A | N/A | N/A | 20/4/4 | AATCC 20/ASTM D 276/ASTM D 1907 | |
| | Warp 2 : | N/A | N/A | N/A | N/A | N/A | N/A | N/A | N/A | N/A | N/A | | |
| | Warp 3 (Rubber) : | N/A | N/A | N/A | N/A | N/A | N/A | N/A | N/A | N/A | N/A | | |
| | Weft : | Cotton Yarn | 20/4/1 | N/A | Cotton Yarn | 20/4/1 | N/A | N/A | N/A | N/A | 20/4/1 | | |
| | Binder : | N/A | N/A | N/A | N/A | N/A | N/A | N/A | N/A | N/A | N/A | | |
| | Stuffer : | N/A | N/A | N/A | N/A | N/A | N/A | N/A | N/A | N/A | N/A | | |
| Lock : | N/A | N/A | N/A | N/A | N/A | N/A | N/A | N/A | N/A | N/A | | | |
| 10 | Ends in full Width : | Ends | | Ends | Wt/Yd (Oun) | Wt/mtr (grm) | | | | | | ASTM D 3775 | |
| | Warp 1 : | 122 | min. | 122 | 0.657 | 20.37 | N/A | N/A | N/A | N/A | 122 | | |
| | Warp 2 : | N/A | N/A | N/A | N/A | N/A | N/A | N/A | N/A | N/A | N/A | | |
| | Warp 3 (Rubber) : | N/A | N/A | N/A | N/A | N/A | N/A | N/A | N/A | N/A | N/A | | |
| | Weft : | 1 | N/A | 1 | 0.078 | 2.41 | N/A | N/A | N/A | N/A | 1 | | |
| | Binder : | N/A | N/A | N/A | N/A | N/A | N/A | N/A | N/A | N/A | N/A | | |
| | Stuffer : | N/A | N/A | N/A | N/A | N/A | N/A | N/A | N/A | N/A | N/A | | |
| Catch-Cord (Lock) : | N/A | N/A | N/A | N/A | N/A | N/A | N/A | N/A | N/A | N/A | | | |
| 11 | Weave : | Herringbone Twill | N/A | Herringbone Twill | | | N/A | N/A | N/A | N/A | Herringbone Twill | Visual | |

| | | | | | | | | | | | |
|--|---|---------------------|--------|---------------------|---------------------|-------------------------|---------------------|--|---------------------|--------------------------------|-------|
| 12 | Warp Yarn Filling type : | 4 Ply | N/A | 4 ply | N/A | N/A | N/A | N/A | 4 ply | Visual | |
| 13 | Weft Yarn Filling type : | Single | N/A | Single | N/A | N/A | N/A | N/A | Single | Visual | |
| 14 | Shade & Shade Code : | Natural NAT | N/A | Natural NAT | N/A | N/A | N/A | N/A | Yellow | Visual | |
| | Spectrophotometer Average five Readings (LxAxB) : | 77.87 x 1.12 x 9.28 | N/A | 76.82 x 1.18 x 8.95 | 76.90 x 1.25 x 8.98 | 76.86 x 1.20 x 8.93 | 76.89 x 1.12 x 8.88 | 76.84 x 1.18 x 8.90 | 76.86 x 1.19 x 8.93 | AATCC TM 173:2015 D65/10* | |
| | Shade Difference (ΔE) : | ≤ 2 | N/A | 0.69 | 0.75 | 0.72 | 0.79 | 0.76 | 0.74 | AATCC TM 173:2015 D65/10* | |
| 15 | Fastness To Washing (Laundering) : | | | | | | | | | | |
| | Color Water | 2-3 | N/A | N/A | N/A | N/A | N/A | N/A | N/A | AATCC 61/TEST 1A | |
| | Colour Weathering | 2-3 | N/A | N/A | N/A | N/A | N/A | N/A | N/A | AATCC 61/TEST 1A | |
| | Light : | N/A | min. | N/A | N/A | N/A | N/A | N/A | N/A | AATCC 16 Option 1 | |
| | Rubbing (Crocking) Wet & Dry : | 3.5 & 1.5 | min. | N/A | N/A | N/A | N/A | N/A | N/A | AATCC 8 | |
| | Perspiration : | N/A | N/A | N/A | N/A | N/A | N/A | N/A | N/A | N/A | |
| 16 | Residual Shrinkage (%) : | ≤12.5 | max. | 6.5 | N/A | N/A | N/A | N/A | N/A | See Clause 4.5.1 | |
| 17 | Melting Point of Yarn (F) : | N/A | N/A | N/A | N/A | N/A | N/A | N/A | N/A | AATCC 20 | |
| 18 | Curvature (Inch) : | 0.25 | max. | 0.06 | 1.65 | mm | 0.07 | 0.06 | 0.07 | 0.07 | 4.5.2 |
| 19 | pH : | 5.5 - 9.0 | N/A | 8 | 8.5 | N/A | N/A | N/A | 8.5 | AATCC 81 | |
| 20 | Resistance to Light (%) : | N/A | N/A | N/A | N/A | N/A | N/A | N/A | N/A | 4.5.1 and PIA-TEST METHOD-4108 | |
| | Resistance to Heat (%) : | N/A | N/A | N/A | N/A | N/A | N/A | N/A | N/A | 4.5.2 and PIA-TEST METHOD-4108 | |
| 21 | Remarks : | | | | | | | | | | |
| | Remarks : | | | | | | | | | | |
| Over All Test Result : | | Pass | | | | Lot Size (Yards) | Sampling | The Sample unit for testing shall be as follows | | | |
| Prepared By (Asst. Lab) | | | Date : | | 800 or less | 2 | Class 1A & Class 1B | | 11 yards & 19 yards | | |
| Checked & Approved By (Lab/QC Inch.) | | | Date : | | 801 up to 22,000 | 3 | Class 2A & Class 2B | | 12 yards & 20 yards | | |
| Doc.no : VSPL/LAB (MIL TTC)/31 REV:00/01.12.22 | | | | | 22,001 & over | 5 | Class 3 | | 20 yards | | |
| Attach Tested Sample Cutting Here | | | | | | | | | | | |

VIRAJ SYNTEX (PVT.) LTD

(An ISO 9001 : 2015 Certified Company)

C-36, UPSIDC Industrial Area, Rooma, Kanpur-209402 (U.P.) INDIA

TEL : +91-9839905653, FAX : +91-512-2691283

WEB : www.virajsyntax.com E MAIL : lab.rooma@virajsyntax.com



TEST REPORT

| Tensile / Breaking Load & Elongation Test - Tapes/Webbings | | | |
|--|-------------------------------|-------------------------|------------|
| Report No. : | VSPL/TT/003 | Date : | 8/12/2024 |
| Order / Job No.: | Viraj Syntex Pvt. Ltd. | Time : | 2:58:19 PM |
| Item Detail : | Cotton Tape 1.0" BS 575 Pound | M/C Capacity (Kgf) : | 20,000 |
| Item Code : | NWFS-PIA-C-9001 Natural | WLL(Kgf) : | N/A |
| Sample No. : | 001 | Batch No. : | Sample |
| Test Specification : | PIA-W-5665 (T-2,C-1) | Grip Distance (mm) : | 150 |
| Test Procedure No. : | PIA-W-5665 (T-2,C-1) | Traverse Speed (mm/min) | 300 |
| Test Discription | | | |
| The test sample shall be centrally clamped between the upper fixed grip and lower moving desired type of grips of the sample and as per required grip distance and traverse speed so that the longitudinal axis of the sample is at right angles to the edges of the grips after pretension.Please refer following Specifications for determination of Breaking Load .Elongation at break. | | | |
| Test Exceptions / Deviations , If Any : | | | |
| TEST RESULTS | | | |
| Test Parameter | Results | Required | |
| Tensile / Breaking Peak Load (Kgf) : | 285 | 261 min. | |
| Elongation at Break (mm) : | 154.5 | N/A | |
| Elongation % at N/A Kgf / WLL : | N/A | N/A | |
| Elongation % at 285 Kgf / Peak Load : | N/A | N/A | |
| TEST GRAPH | | | |
| <p>The graph plots Load (Kgf) on the y-axis (0 to 382) against Displacement (mm) on the x-axis (0.0 to 160.0). The load increases linearly from 0 Kgf at 0 mm to a peak of 285 Kgf at 154.5 mm. After the peak, the load drops sharply to approximately 180 Kgf at 160 mm.</p> | | | |
| Final Test Results : | PASS | FAIL | |
| Test Comments / Remarks : | | | |
| Tested By (Lab Assistant) : Name Signatures | | | |
| Checked By (Lab/QC Incharge) : Name Signatures | | | |
| Doc No : VSPL/LAB/06/TM/Rev:01/20.11.23 | | | |

Smart Utility For Spectrophotometer

Save

Print

Export

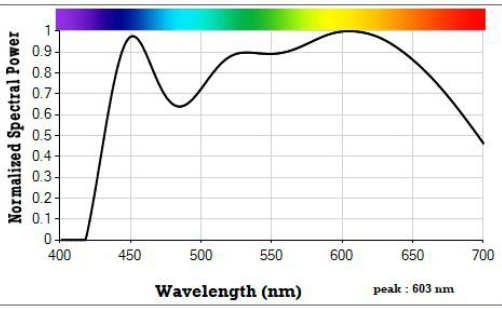
Import

Send Reference to Device

Offset

Min

Exit



| D65/10° | | |
|---------------------------|------------|-----------------------|
| XYZ | X = 57.06 | Y = 59.64 Z = 52.55 |
| Yxy | Y = 59.64 | x = 0.34 y = 0.35 |
| CIE | L* = 81.64 | a* = 1.27 b* = 10.7 |
| | L* = 81.64 | C* = 10.78 h° = 83.21 |
| Hunter | L* = 81.64 | u* = 8.37 v* = 15.2 |
| | L = 77.23 | a = 1.21 b = 9.19 |
| CCT = 5309 Kelvin | | |
| Peak Wavelength = 603 nm | | |
| RGB = 215,201,179 | | |
| CMYK = 0,6.51,16.74,15.69 | | |

- Index Is Not Selected
-Available Indices-
- Whiteness Index (CIE)
 - Whiteness Index (Hunter)
 - Whiteness Index (Stensby)
 - Whiteness Index (All)
 - Yellowness Index (YI)
 - Baking Contrast Unit (BCU)
 - Tomato Color Index (TCI)
 - Ripening Index
 - Citrus Color Index (CCI)
 - Citrus Number (CN)
 - Citrus Red (CR)
 - Coffee Roast Index
 - Road Marking Paint

MATCH :

99%

| | |
|---------------------|----------------------|
| ΔE^* : 0.69 | ΔL^* : -0.68 |
| Δa^* : 0.09 | Δb^* : 0.08 |

Alarm Limit : 0%

Select Port :

COM3

Close

- Single Measurement
- Real Time Analysis
- Find Match from Database
- Color Based Grading

E.g., Company details, operating station, sample description, batch and lot number, sample supplier details, date and time..

